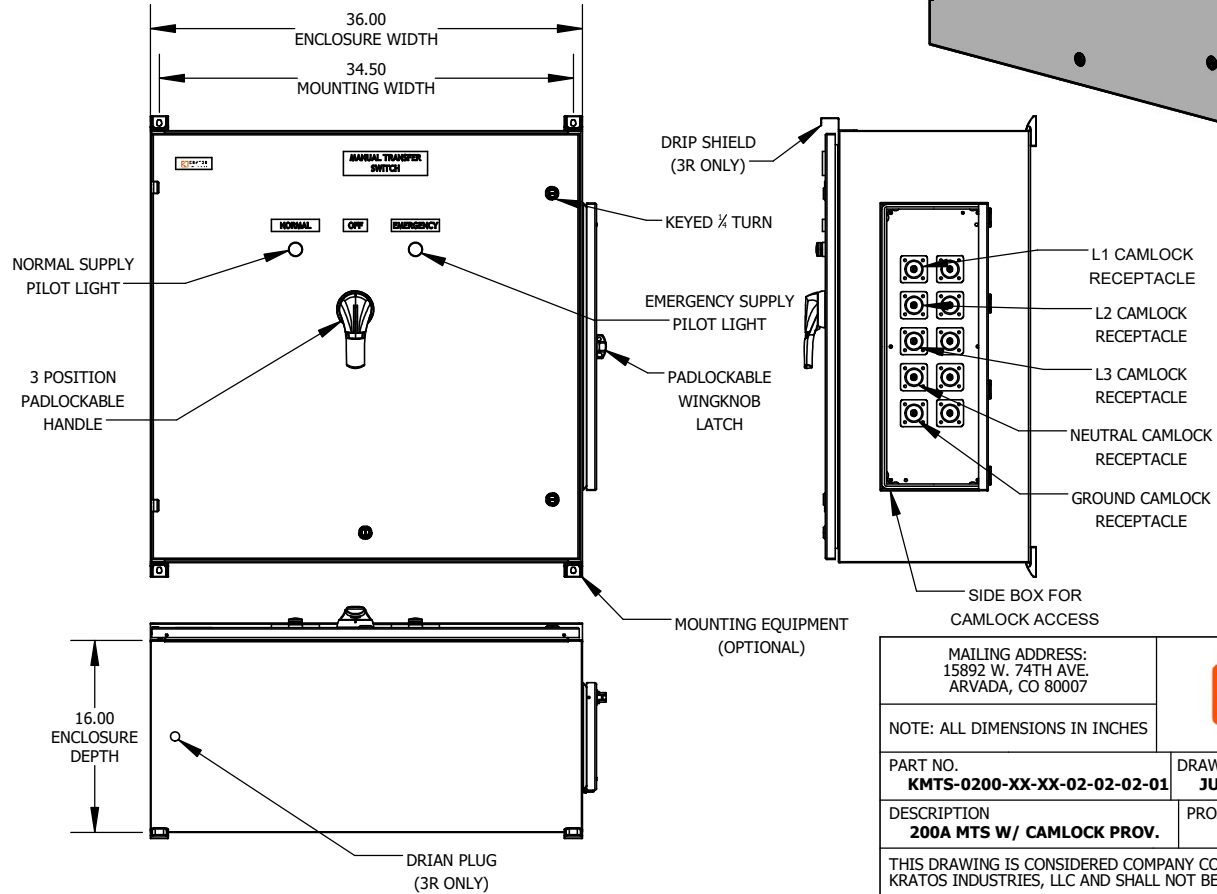
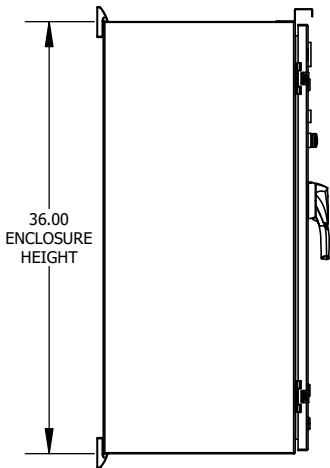
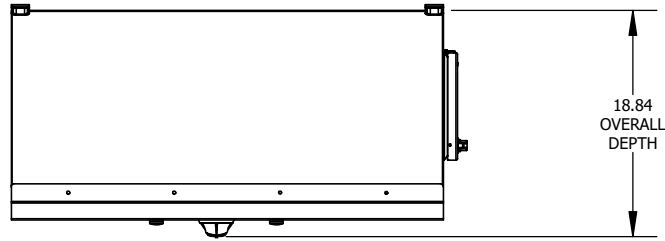
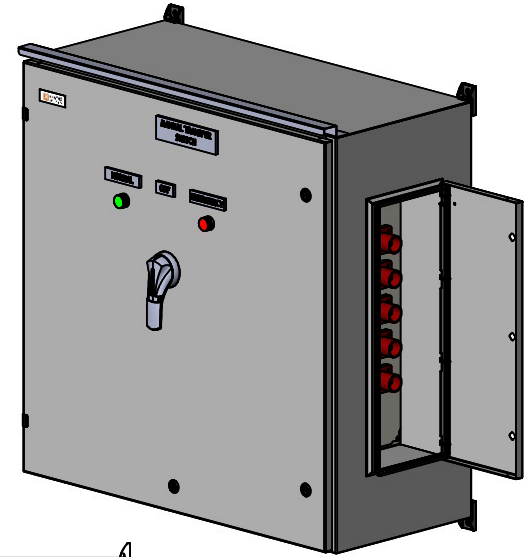


REV.	DESCRIPTION	DATE
A	INITIAL RELEASE	7/7/2020

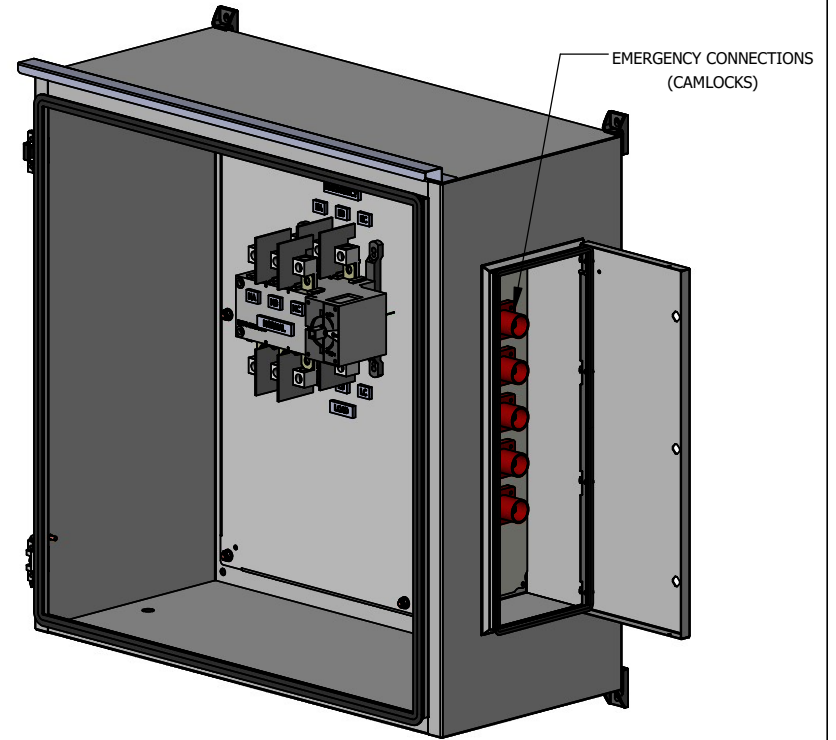
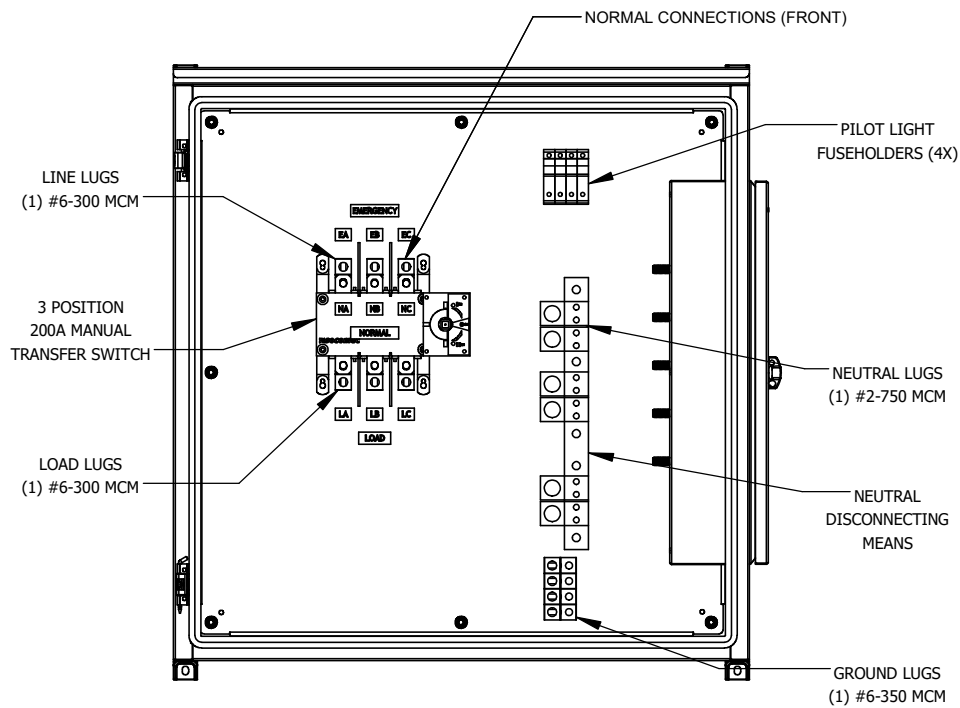
**SPECIFICATIONS**  
 MAX VOLTAGE - 600VAC 3 Ø  
 RATED CURRENT - 200 A  
 STANDARDS - UL508A  
 ENCLOSURE RATING - **SEE CHART**  
 DURABILITY - 6050 CYCLES  
 LINE SIDE CABLE BEND RADIUS - 10.50"  
 LOAD SIDE CABLE BEND RADIUS - 16.50"

PART NUMBER	TYPE	FINISH
KMTS-0200-XX-01-02-02-02-01	1	ANSI 61
KMTS-0200-XX-02-02-02-02-01	3R	ANSI 61
KMTS-0200-XX-03-02-02-02-01	4X	304 SS STD. (316 SS OPTIONAL)



MAILING ADDRESS: 15892 W. 74TH AVE. ARVADA, CO 80007		
NOTE: ALL DIMENSIONS IN INCHES		
PART NO. <b>KMTS-0200-XX-02-02-02-01</b>	DRAWN BY <b>JUSTIN HILBERT</b>	SHEET <b>1 of 2</b>
DESCRIPTION <b>200A MTS W/ CAMLOCK PROV.</b>		PROJECT
THIS DRAWING IS CONSIDERED COMPANY CONFIDENTIAL AND PROPERTY OF KRATOS INDUSTRIES, LLC AND SHALL NOT BE USED WITHOUT WRITTEN CONSENT.		

REV.	DESCRIPTION	DATE
A	INITIAL RELEASE	7/7/2020



MAILING ADDRESS: 15892 W. 74TH AVE. ARVADA, CO 80007		
NOTE: ALL DIMENSIONS IN INCHES		
PART NO. <b>KMTS-0200-XX-XX-02-02-01</b>	DRAWN BY <b>JUSTIN HILBERT</b>	SHEET <b>2 of 2</b>
DESCRIPTION <b>200A MTS W/ CAMLOCK PROV.</b>		PROJECT
THIS DRAWING IS CONSIDERED COMPANY CONFIDENTIAL AND PROPERTY OF KRATOS INDUSTRIES, LLC AND SHALL NOT BE USED WITHOUT WRITTEN CONSENT.		