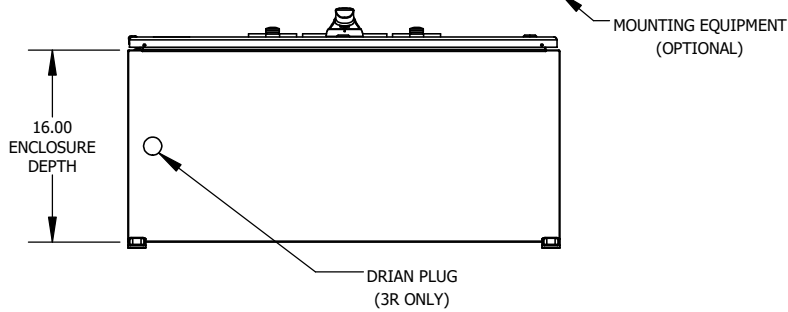
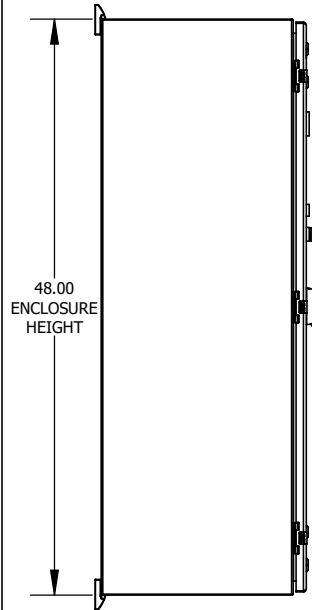
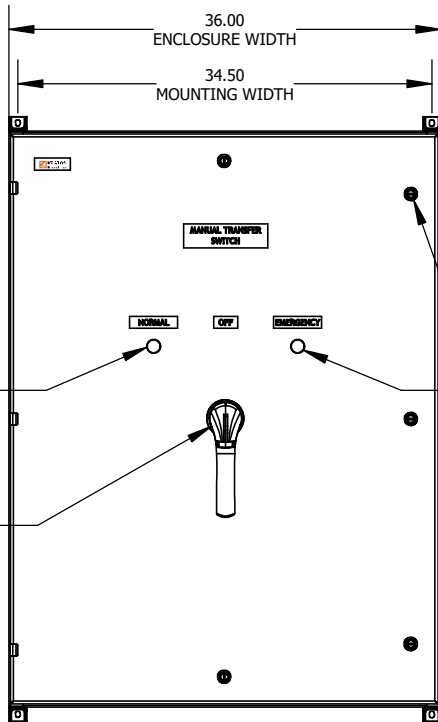
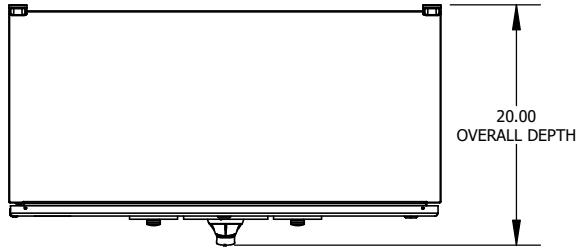


REV.	DESCRIPTION	DATE
A	INITIAL RELEASE	6/23/2020

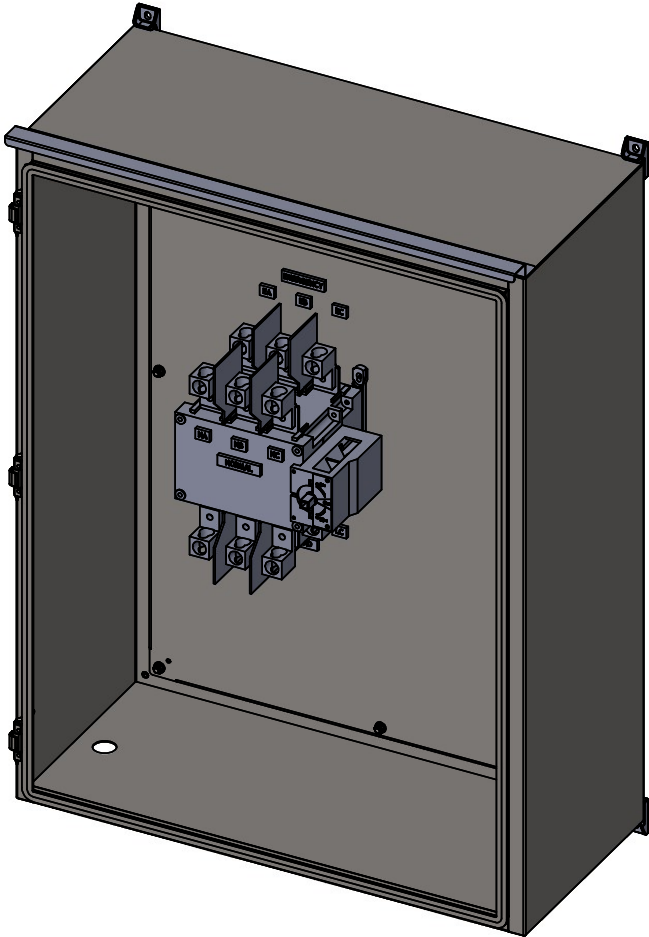
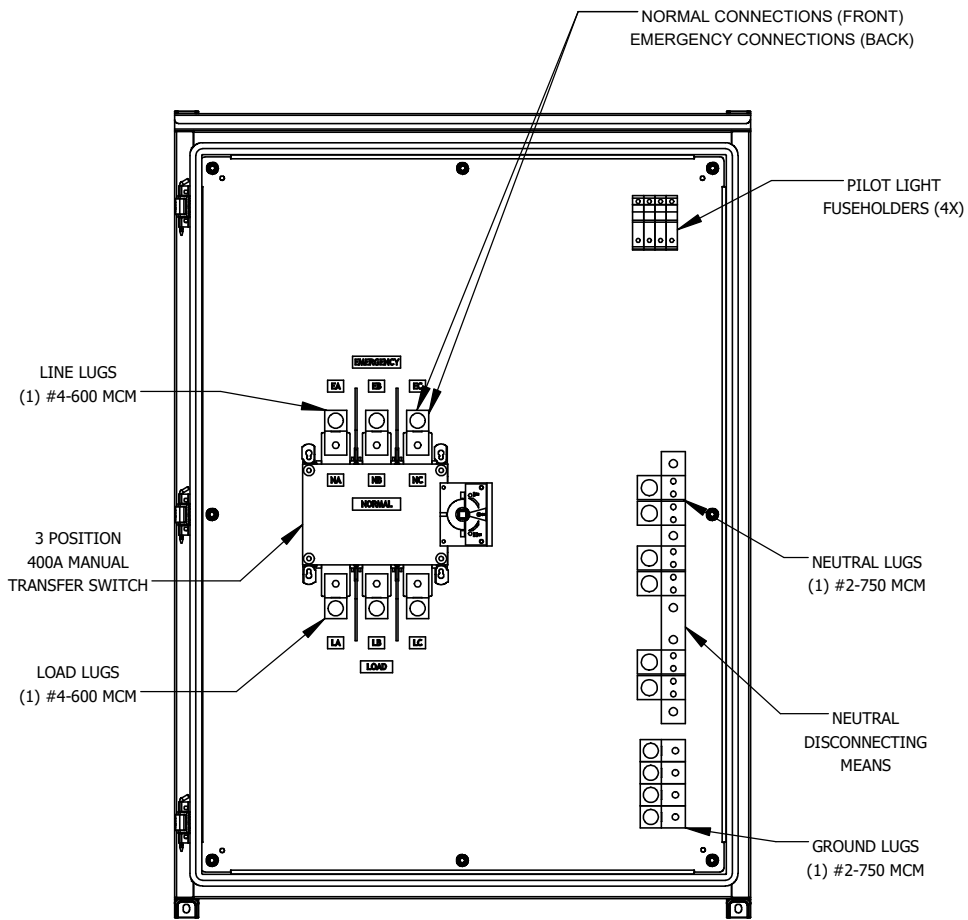
SPECIFICATIONS
 MAX VOLTAGE - 600VAC 3 Ø
 RATED CURRENT - 400 A
 STANDARDS - UL508A
 ENCLOSURE RATING - **SEE CHART**
 DURABILITY - 6050 CYCLES
 LINE SIDE CABLE BEND RADIUS - 14.00"
 LOAD SIDE CABLE BEND RADIUS - 14.00"

PART NUMBER	TYPE	FINISH
KMTS-0400-XX-01-02-02-02	1	ANSI 61
KMTS-0400-XX-02-02-02-02	3R	ANSI 61
KMTS-0400-XX-03-02-02-02	4X	304 SS STD. (316 SS OPTIONAL)



MAILING ADDRESS: 15892 W. 74TH AVE. ARVADA, CO 80007		
NOTE: ALL DIMENSIONS IN INCHES		
PART NO. KMTS-0400-XX-XX-02-02-02	DRAWN BY JUSTIN HILBERT	SHEET 1 of 2
DESCRIPTION 400A NON-FUSED MTS		PROJECT
THIS DRAWING IS CONSIDERED COMPANY CONFIDENTIAL AND PROPERTY OF KRATOS INDUSTRIES, LLC AND SHALL NOT BE USED WITHOUT WRITTEN CONSENT.		

REV.	DESCRIPTION	DATE
A	INITIAL RELEASE	6/23/2020



MAILING ADDRESS:
15892 W. 74TH AVE.
ARVADA, CO 80007

NOTE: ALL DIMENSIONS IN INCHES



PART NO.
KMTS-0400-XX-XX-02-02-02

DRAWN BY
JUSTIN HILBERT

SHEET
2 of 2

DESCRIPTION
400A NON-FUSED MTS

PROJECT

THIS DRAWING IS CONSIDERED COMPANY CONFIDENTIAL AND PROPERTY OF KRATOS INDUSTRIES, LLC AND SHALL NOT BE USED WITHOUT WRITTEN CONSENT.