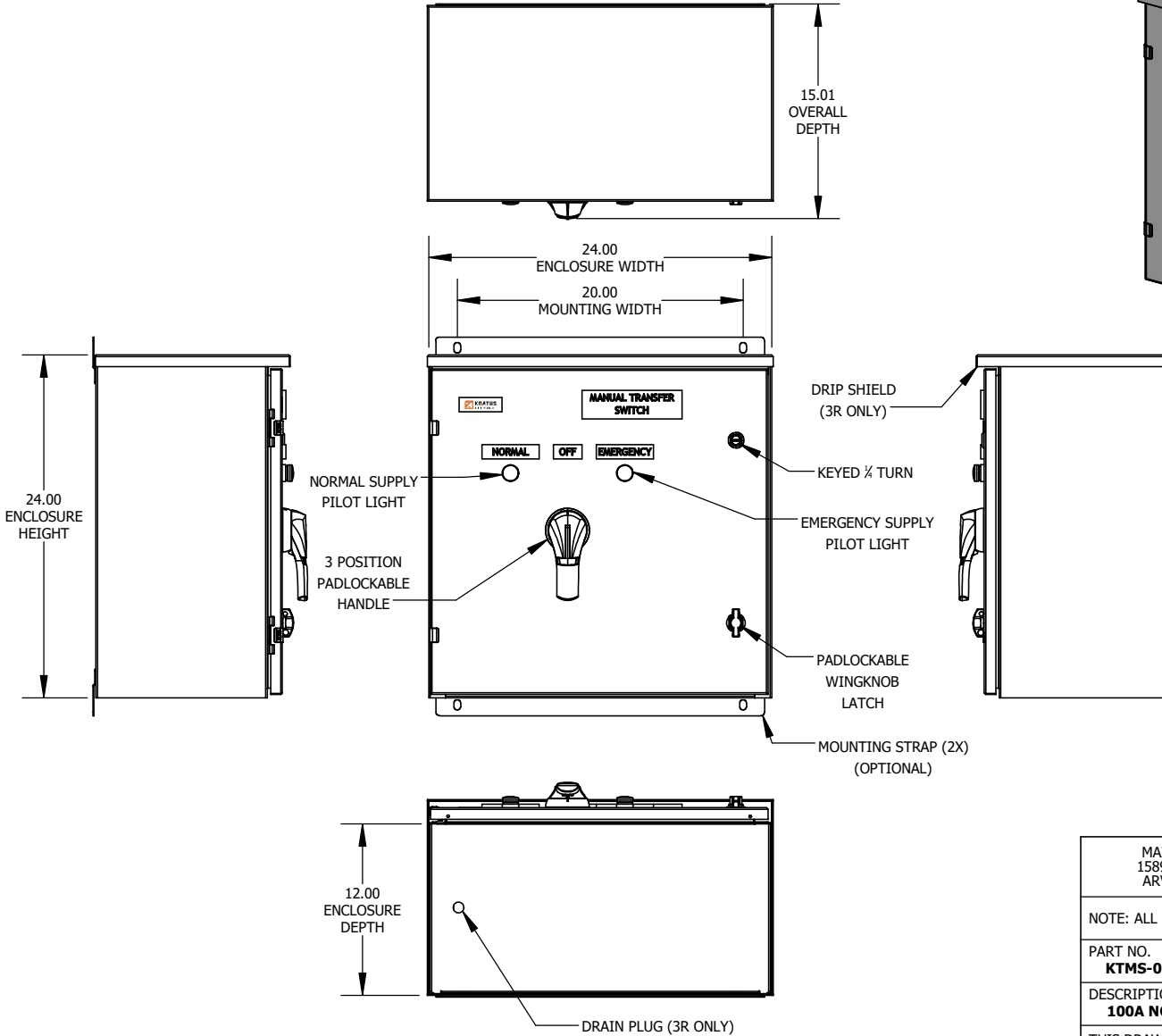
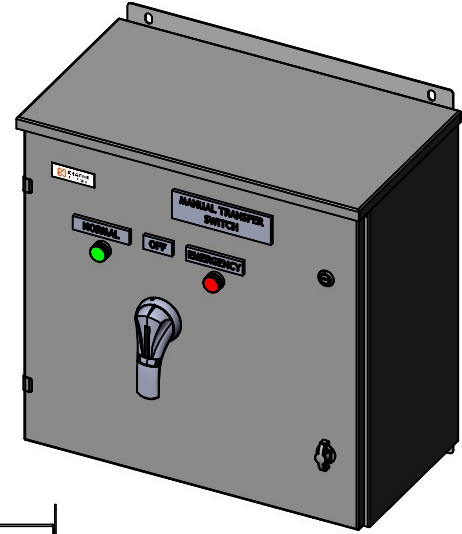


SPECIFICATIONS
 MAX VOLTAGE - 600VAC 3 Ø
 RATED CURRENT - 100 A
 STANDARDS - UL508A
 ENCLOSURE RATING - **SEE CHART**
 DURABILITY - 6,050 CYCLES
 LINE SIDE CABLE BEND RADIUS - 8.00"
 LOAD SIDE CABLE BEND RADIUS - 7.25"

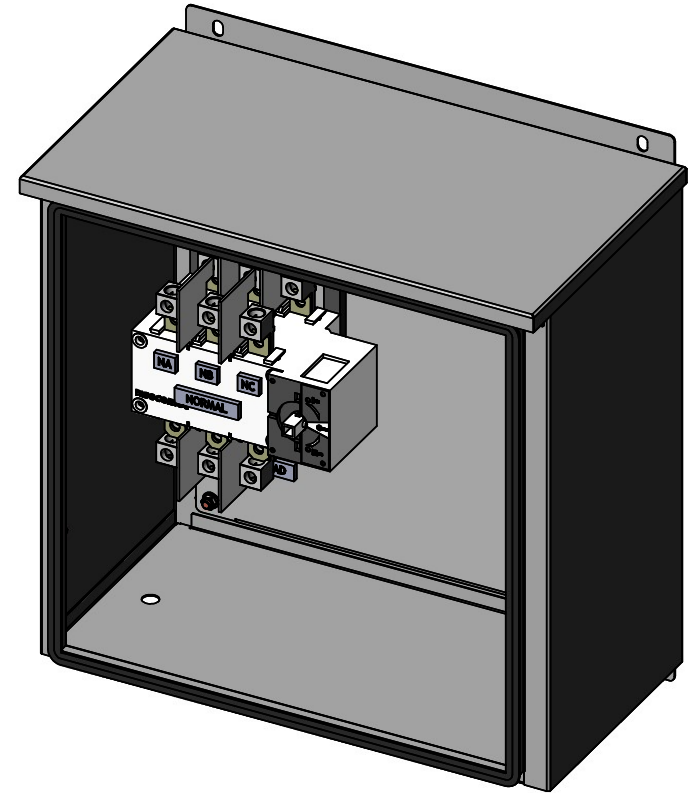
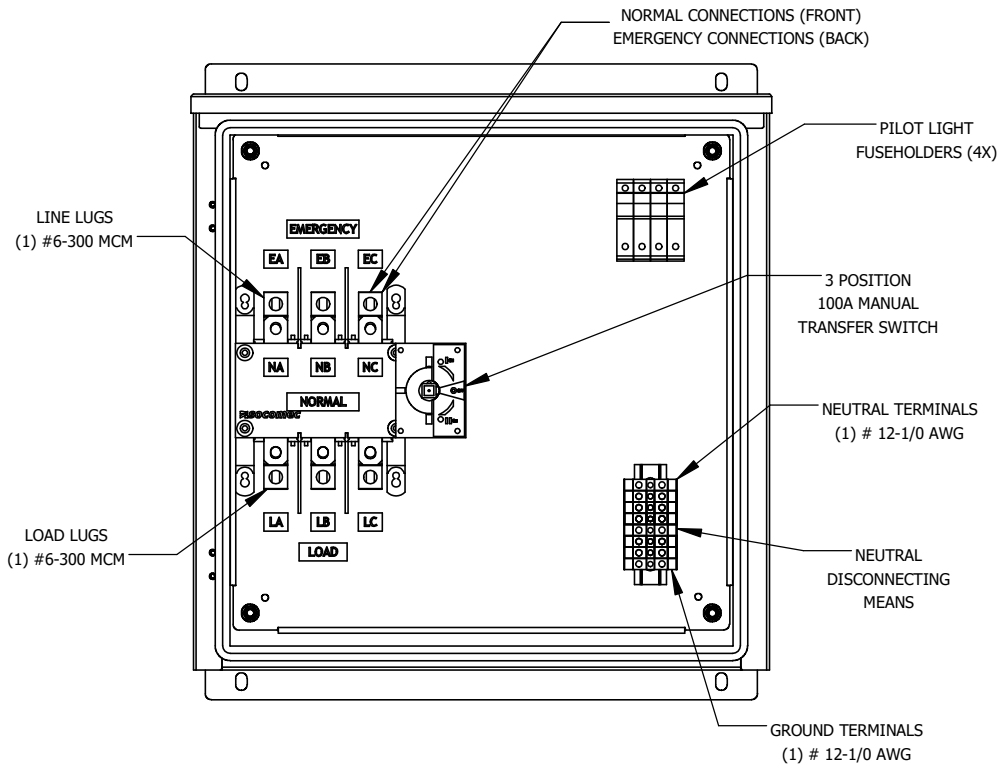
PART NUMBER	TYPE	FINISH
KTMS-0100-XX-01-02-02-02	1	ANSI 61
KTMS-0100-XX-02-02-02-02	3R	ANSI 61
KTMS-0100-XX-03-02-02-02	4X	304 SS STD. (316 SS OPT.)

REV.	DESCRIPTION	DATE
A	INITIAL RELEASE	5/13/2020



MAILING ADDRESS: 15892 W. 74TH AVE. ARVADA, CO 80007		
NOTE: ALL DIMENSIONS IN INCHES		
PART NO. KTMS-0100-XX-XX-02-02-02	DRAWN BY JUSTIN HILBERT	SHEET 1 of 2
DESCRIPTION 100A NON-FUSED MTS		PROJECT
THIS DRAWING IS CONSIDERED COMPANY CONFIDENTIAL AND PROPERTY OF KRATOS INDUSTRIES, LLC AND SHALL NOT BE USED WITHOUT WRITTEN CONSENT.		

REV.	DESCRIPTION	DATE
A	INITIAL RELEASE	5/13/2020



MAILING ADDRESS: 15892 W. 74TH AVE. ARVADA, CO 80007		
NOTE: ALL DIMENSIONS IN INCHES		
PART NO. KTMS-0100-XX-XX-02-02	DRAWN BY JUSTIN HILBERT	SHEET 2 of 2
DESCRIPTION 100A NON-FUSED MTS		PROJECT
THIS DRAWING IS CONSIDERED COMPANY CONFIDENTIAL AND PROPERTY OF KRATOS INDUSTRIES, LLC AND SHALL NOT BE USED WITHOUT WRITTEN CONSENT.		